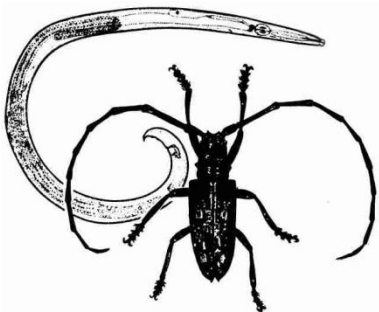




# ***ISPM 15*** ***The Regulatory Angle***

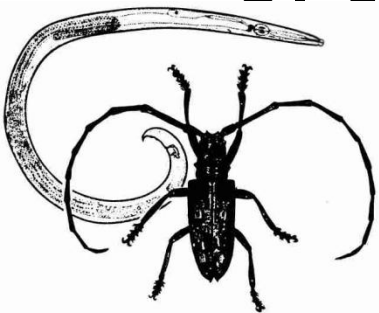
**Roman VÁGNER**  
**DG SANCO E2**

**FEFPEB Special Meeting**  
**Policy & Technical Committee**  
***Brussels, 11 October 2011***



# Content

- 1. EU Plant Health Regime Review
- 2. EU PWN status
- 3. Scientific research projects
- 4. APHIS
- 5. China
- 6. ISPM 15 – dielectric heating

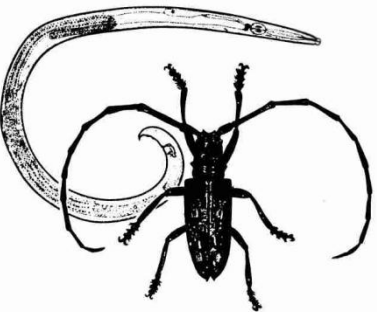




# 1. EU Plant Health Regime Review

## ■ Evaluation 2009-2010

- Consultation of stakeholders and Member States
- Interim conference (23-24 February 2010)
- Final conference (28 September 2010)

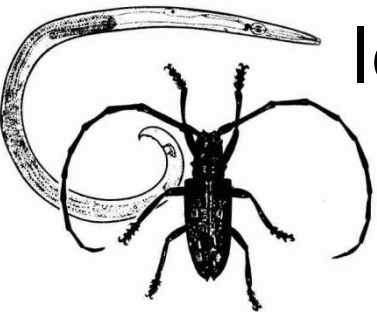




# 1. EU Plant Health Regime Review

## *Legislative proposal*

- Developed in course of 2011-2012
- New structure (legibility, simplification, transparency)
- Regulation
- Interactive process with review of S&PM legislation and Regulation 882/2004/EC

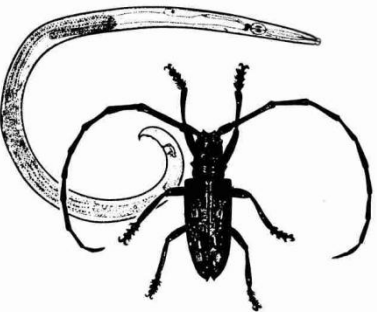




# 1. EU Plant Health Regime Review

## *Legislative proposal (cont.)*

- Horizontal elements will be transferred to Regulation 882/2004
- First internal coordination and approval; then publication of legal proposal

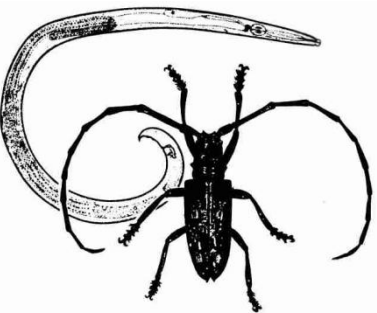




# 1. EU Plant Health Regime Review

## *Impact assessment*

- Supplementary economic study (December 2010 - July 2011)
- Further data collection by DG SANCO
- All integrated into impact assessment



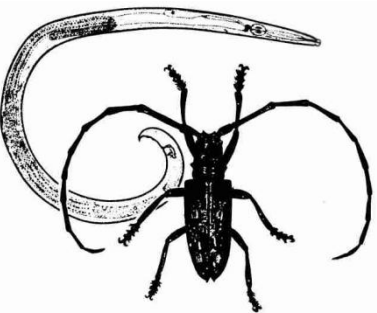


# 1. EU Plant Health Regime Review

## *Impact assessment (cont.)*

### ■ Inter-Service Steering Group

- Participation of DG AGRI, ENV, TRADE, RTD, ENTR, TAXUD, BUDG, LS, SecGen (and FVO)

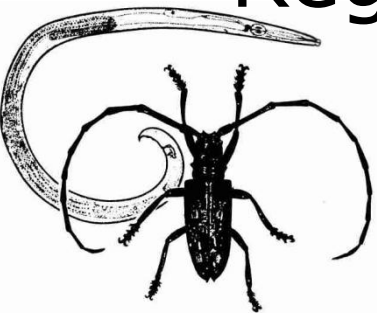


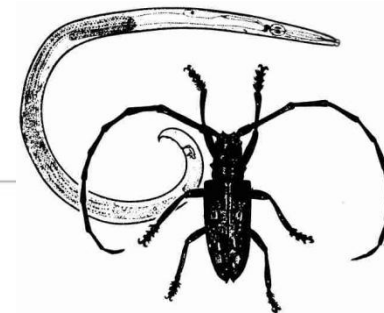


# 1. EU Plant Health Regime Review

## *Impact assessment (cont.)*

- Draft IA now to be sent to IA Board
- IA only to be made public along with the legal proposal in 2012
- Separate impact assessments for Regulation 882/2004 and for S&PM law





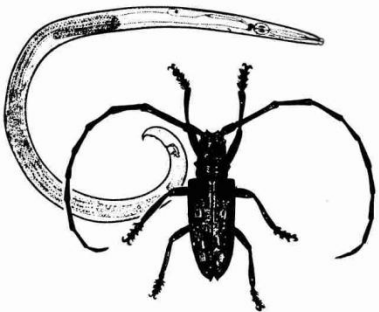
## 2. EU PWN Status

### ■ Findings

- Portugal (mainland, Madeira)
- Spain (Extremadura – XI/2008, Galicia – XI/2010)
- Commission Decision 2006/133/EU
  - Repeal and revision under discussion
  - CHEP paper taken into account
  - EFSA to express its opinion re host plants

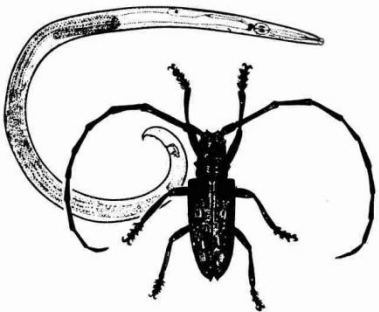
## 3. Scientific Research Projects

- EFSA – requested for opinion re PWN hosts
- REPHRAME (*Development of improved methods for detection, control and eradication of pine wood nematode in support of EU Plant Health policy*)
- ISEFOR (Increasing Sustainability of European Forests: Modelling for Security against Invasive Pests and Pathogens under Climate Change)



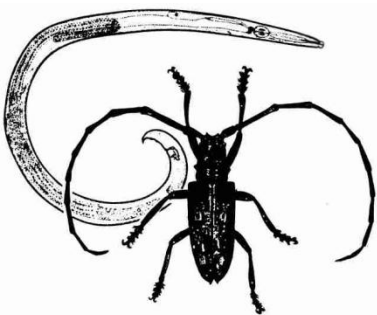
## 4. APHIS

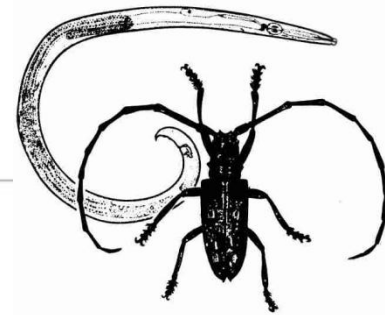
- Risk Assessment for the Movement of Domestic Wood Packaging Material within the United States (May 2011)



## 5. China

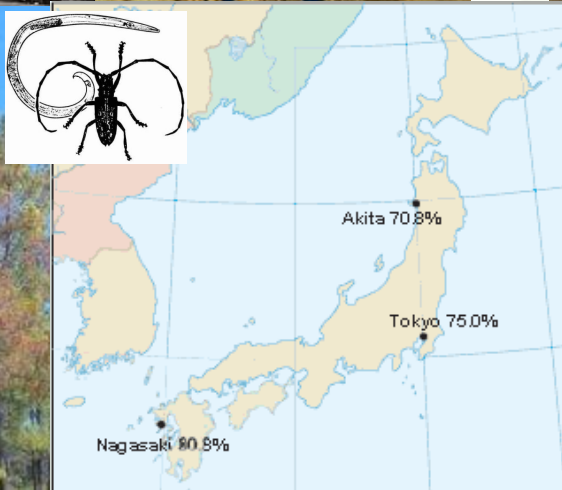
- 2 August 2011 – Info from EU Delegation in CN:  
*“AQSIQ agrees with the EU interpretation of ISPM 15, they will issue a notice to CIQs to clarify that wood packaging material ISPM compliant can be accepted even if its origin is not from the country of expedition. EU should signal problems if they remain. »*
- **Any problems ?**





## 6. ISPM 15 – Dielectric Heat

- Draft text in Country Consultation 2011
- New scientific evidence for wet and frozen wood
- Considered by IFQRG (Australia, IX/2011)
- Solution to be proposed by CPM TPF
- CPM Standards Committee – XI/2011





***THANK YOU FOR YOUR  
ATTENTION***

