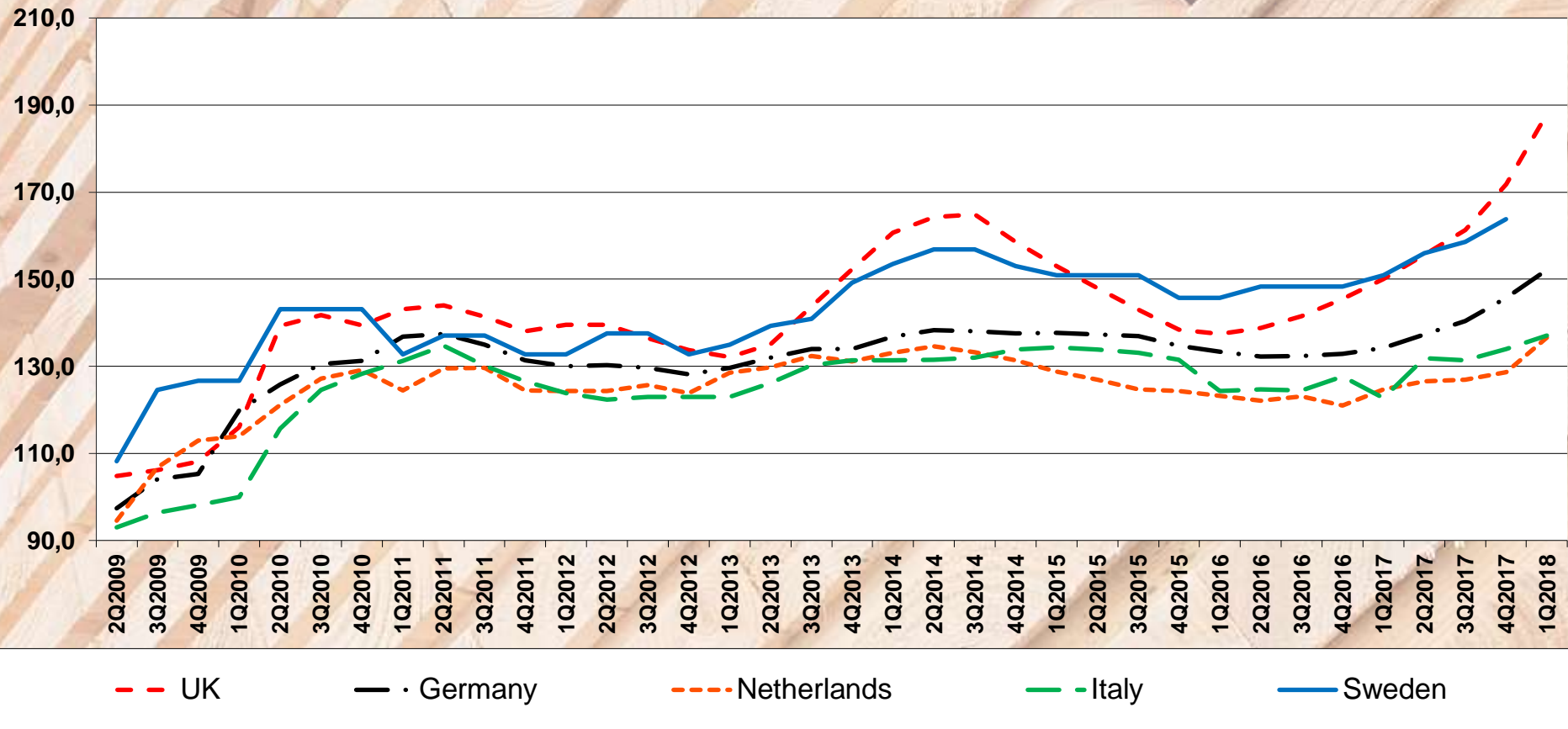


## FEFPEB Pallet timber price index Q1 2018 (Q1 2009 = 100)



### Pallet Timber Price Indices

These are not the absolute prices per m<sup>3</sup>, but from the national timber price indices of the UK, Germany, Italy, Sweden and The Netherlands, comparable pallet wood sizes are taken and the same base year determined (2009) to make them comparable. The FEFPEB pallet timber price index indicates a trend in the development of the wood prices for pallets in Europe.